

HEBRON ORCHESTRA PRESENTS

*The
Masquerade
Ball*





A mask you ask? Optional I find!
Masks lend appeal of a mysterious kind.

*E.A. Bucchianeri,
Phantom Phantasia*

Symphonic Concert Orchestra

Phantom of the Opera

Theme from Phantom of the Opera

All I Ask of You

Music of the Night

The Mask of Zorro

Zorro's Theme

The Plaza of Execution

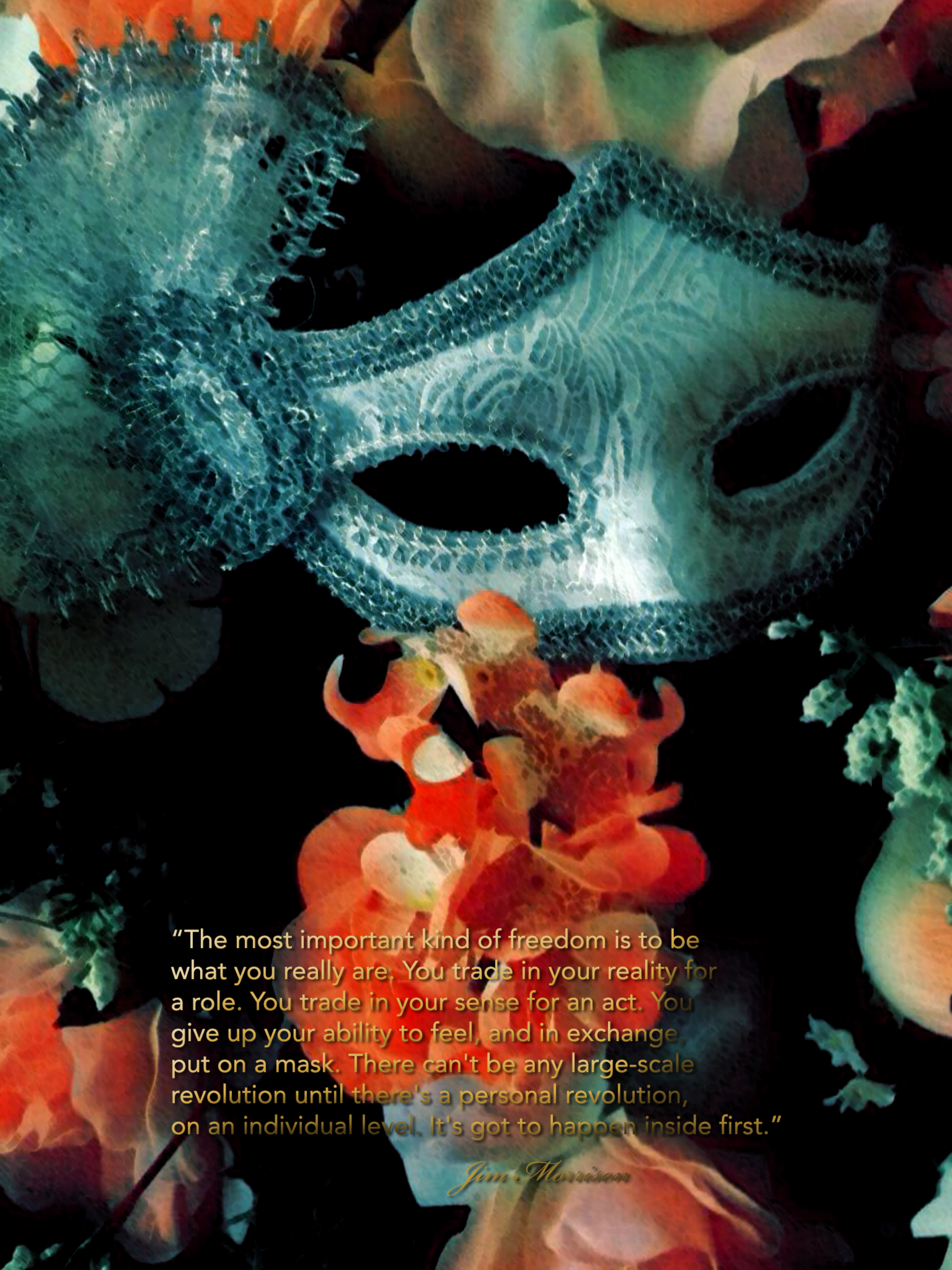
The Ride

I Want to Spend My Lifetime Loving You

Two Scenes From the Hollow

Ichabod's Walk

Hessian's Ride



"The most important kind of freedom is to be what you really are. You trade in your reality for a role. You trade in your sense for an act. You give up your ability to feel, and in exchange, put on a mask. There can't be any large-scale revolution until there's a personal revolution, on an individual level. It's got to happen inside first."

Jim Morrison

Concert Orchestra

Violin

Christopher Anand
Brendan Collins
Yewon Han
Amy Huh
Dylen Lee
Thao Nguyen
Zoya Niazi
Seohyun Park
Aneka Ung
Brian Yoon

Viola

Edmer Banegas
Stella Choi
Drake De Leon
Dinh Nguyen
Ethan Subramanian

Cello

Helena Song
Joshua Young

Bass

Connor Redrow



3

Symphonic Orchestra

Violin

Lawrence Choi
Minyoung Choi
Anna Furnival
Isaac Gonzalez
Mira Herrera
Lillia Hoang
Emily Ke
One Lee
Shiva Massali
Jasmine Mathews
Justin Park
Natasha Prema
Inarra Subazali
Hailey Young
Sunjong Yun
Chanjong Yun
Mckenna Zeigler

Viola

Tim David
Emy Mathews
Victor Mijares
Juliette Montognese
Joshua Moses
April Nguyen
Lilian Nguyen
Naomi Phillip
Jacqueline Phu
Anvita Shah

Cello

Grace Cho
Lynn Joustra
Julie Kim
Alex Nelson
Kristina Nguyen
Michael Sheldon

Bass

Jason Colunga
Jacob Kimbel



"The mirror will only lie, when you look at it through a mask."

Anthony Liccione

Chamber Orchestra

Allegro Assai
from Violin Concerto in A Minor
J.S. Bach
featuring Elizabeth Wei, violin

Allegro
from Eine Kleine Nachtmusik
Serenade No. 13 for Strings in G Major
Wolfgang Amadeus Mozart

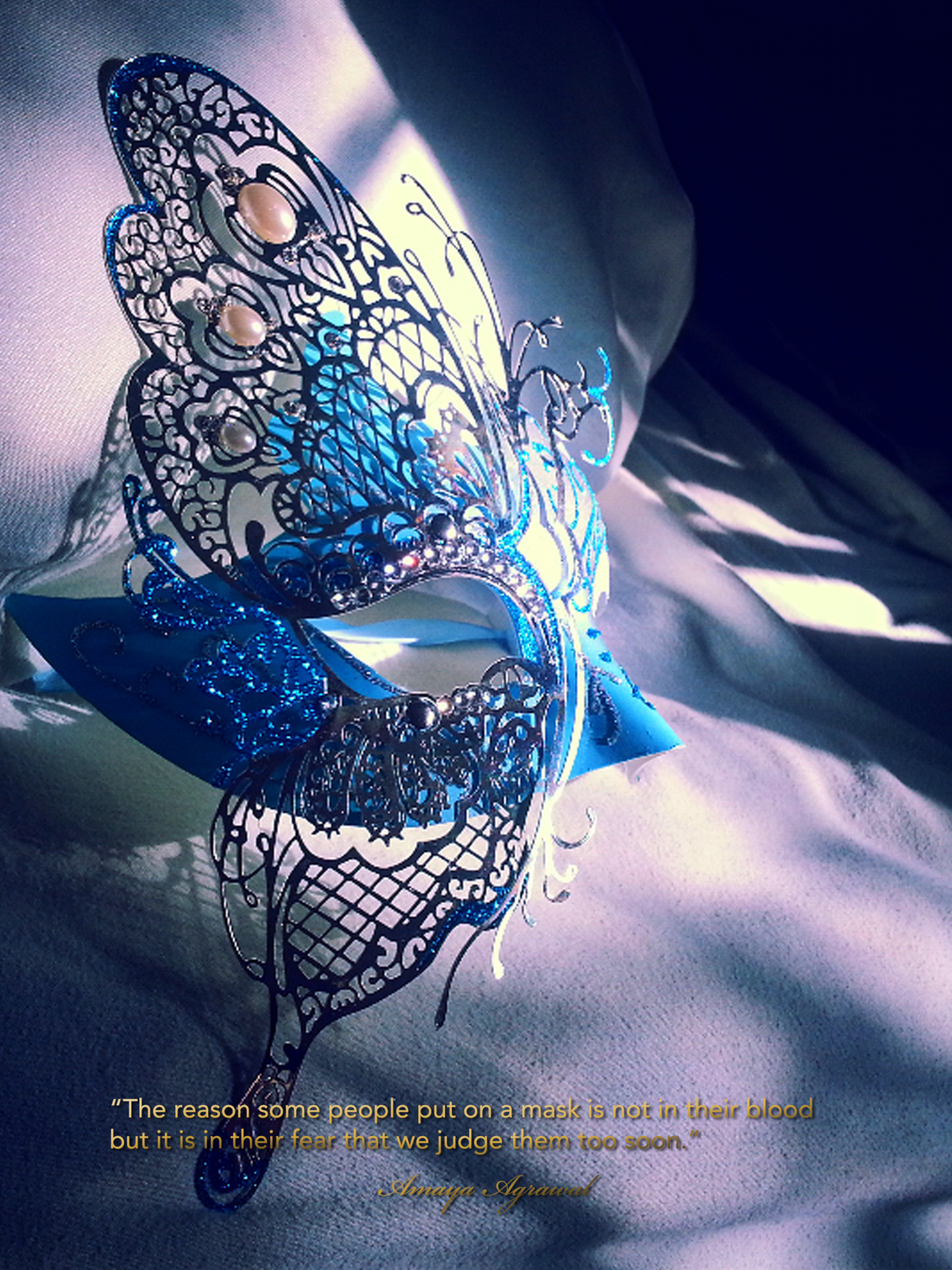
Erkönig
Franz Schubert

Themes from Romeo and Juliet
Pyotr Ilyich Tchaikovsky



"If you wear a mask for too long, there will come a time when you can not remove it without removing your face."

Matshona Dhliwayo



"The reason some people put on a mask is not in their blood
but it is in their fear that we judge them too soon."

Amaya Agrawal

Chamber Orchestra

Violin

Raymond Chen
Maximus Chu
Sophie Ebbinghouse
Travis Harris
Amy John
Erica Kang
Grace Kang
Audrey Lee
Sade Oyedipe
Abbey Raymond
Nathan Subramaniam
Elodie Tan
Antonio Villarreal
Elizabeth Wei
Jamie Yoon

Viola

Emily Liu
Andrew Livesay
Helen Nguyen
Roshan Paul
Hulda Sun

Cello

Claire Chong
Hee Jae Hong
Isaac Ke
Sean Livingstone
Kha Nguyen
Ankita Padarthy
Rishul Ravi

Bass

Sammy Alivernia
Aidan Burnett

Program Notes

Eine Kleine Nachtmusik


Wolfgang Amadeus Mozart was born in the little city of Salzburg, Austria to a well-off family. His father was a bookbinder and a musician while his mother's family withheld a favorable reputation in government. Mozart began composing at the budding age of five, where he scribbled his first concerto. With the encouragement of his father, he continued to grow as an artist until eventually he toured Europe for the remainder of his childhood. He played for the nobleman and the common person alike, catering to his audience's fancies with each new composition. As he aged, he evolved into one of the most versatile composers of all time. Not only did he write orchestral pieces, but he also composed operas, chamber works, and Masses for the Catholic Church. Mozart became legendary, however died young at the age of 34.

One of his most popular pieces, "Eine Kleine Nachtmusik", was written towards the end of his life, but was not popularized and published until 40 years after his death. Educators have discovered evidence of a mysterious fifth movement to the four movement piece. The direct translation of "Eine Kleine Nachtmusik" is "A Little Night Music" and is a serenade. This type of composition was typically used in courtship dances or rituals; the goal of it was to sound light and effortless to the listener.

Romeo and Juliet

The Romantic time period spanned the early 18th century and lasted throughout the 19th century. Several great composers, including Chopin, Mendelssohn, Strauss, Brahms, Dvorak, Saint-Saens, and Tchaikovsky, arose from this time period. Pyotr Ilyich Tchaikovsky is considered to be one of the most popular composers of the Romantic era, and his works have been integral parts of the classical music repertoire. Romantic music focused on expressing emotions instead of pleasing the audience, and can be recognized by the drastic changes in mood and volume of the pieces.

Tchaikovsky, much like several other Romantic composers, took inspiration from notable literary works. Themes from Romeo and Juliet, an arrangement of the Romeo and Juliet Overture, retains the spirit of both the original work and the Romantic time period. When the piece was released, it received a cool reception; however, it has now become a very recognizable piece and has been used in several movies, shows, and has even been featured in video games. The Overture exemplifies the tensions and tragedy that Romeo and Juliet face through the course of the play and uses an agitated tone juxtaposed with a soothing melody to achieve this. The speed of the piece increases as the tensions between both families increases, but the speed decreases as Romeo and Juliet begin to fall in love.



"My father, my father, and dost thou not hear
the words that the Erl-King now breathes in mine ear?
Be calm, dearest child, 'tis thy fancy deceives;
'Tis the sad wind that sighs through the withering leaves."

Johann Wolfgang von Goethe

Lewisville ISD

LISD

Superintendent Dr. Kevin Rogers
East Zone Leader Leigh Ann Lewis

Director of Fine Arts Bill Watson
Coordinator of Fine Arts Missy Head

Hebron High School

Principal Scot Finch
Assistant Principal Vanessa Robichaux
Assistant Principal Sandra Lee
Assistant Principal Dedrick Buckels
Assistant Principal Shawnda LaRocque
Assistant Principal Jacob Garlinger
Assistant Principal Amy Obenhaus

Hebron HS

Principal Amanda Werneke
Assistant Principal Deanna Gerde
Assistant Principal James Scott

Hebron HS Fine Arts

Band Andy Sealy
Band JP Wilson
Band Travis Pruitt
Band Tanner Trigg
Choir Rachel Forester
Choir Nathan Ratliff
Theater Ryan Heitzman
Theater Cory Broom
Theater Liz Shurr
Theater Andrea Throop
Orchestra Matthew Cautivar

Hebron HS Orchestra

Booster Club

President Cindy Alivernia

Vice President Terri Ebbinghouse

Vice President Tamara Dattola

Treasurer Jasmin Moses

Secretary Shuwen Hung

Student Officers

President Ankita Padarthy

Historian Helen Nguyen

Visual Arts Audrey Lee

Stage Manager Travis Harris

Secretary Abbey Raymond

Symphonic Rep Alex Nelson

Concert Rep Brian Yoon

Social Media

Jamie Yoon

Elodie Tan

Program Art

HHSO Art Committee

Hebron Cluster Orchestras

Arbor Creek / Creek Valley MS Nancy Heffernan

ACMS / CVMS Music Consultant Jenna Park

Killian Middle School Ezra Hood

Private Lessons

Jonathan Fisher

Cindy Park

Kristin Waymel

Special Thanks

HHSO Stage Crew

Stephen Clink

Matt Cross

David DeVoto

Laura Gilbert

Jeff Harvick

Amy John

Colin Meinecke

Matt Moreno

Gary Needham

Dawn Oyedipe

Kevin Sluder

Amanda Su

Allison Washler

Thank you parents, family, and friends!

www.hebronorchestra.org

Instagram and Twitter @hebronorchestra